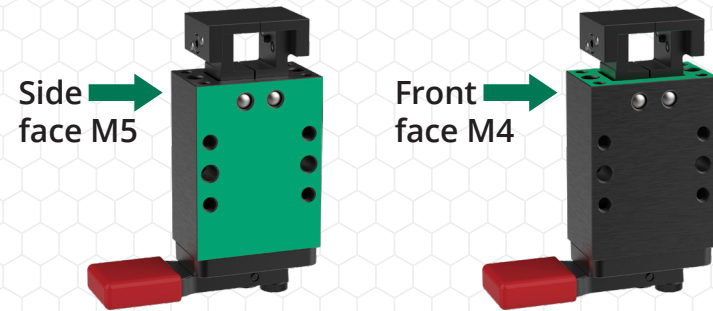
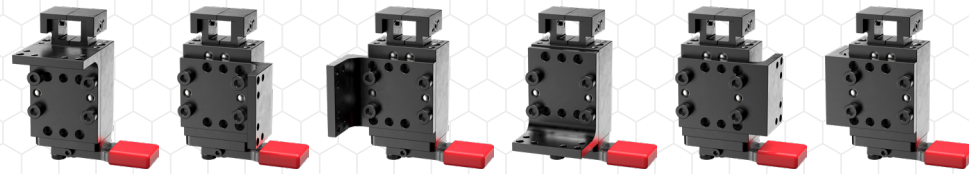


Mounting Options

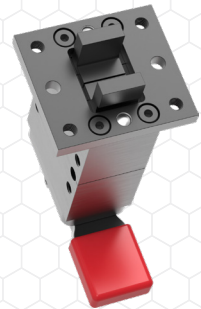
Standard Mounting
(included)



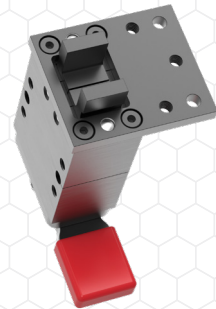
CLM-4MA-BUD
Angle Bracket
(6 orientations)



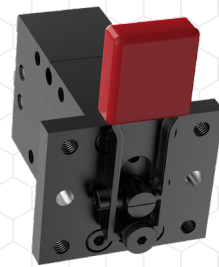
CLM-4MF-BUD
Front Mount
Plate — Centered



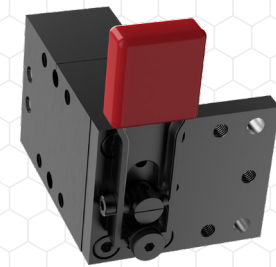
CLM-4MFS-BUD
Front Mount
Plate — Side



CLM-4MRC-BUD
Rear Mount
Plate — Centered



CLM-4MRS-BUD
Rear Mount
Plate — Side



Clip Buddy ^{Patent 10,072,685}

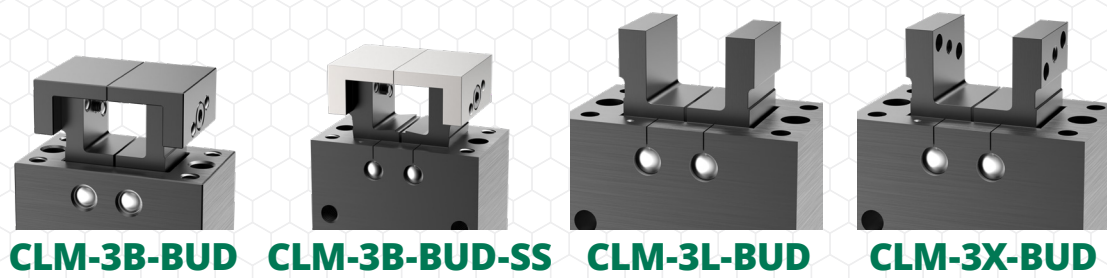
Clip holding device for fixtures

Compact design, requires less access space for actuation

- Solid, snap-action closing
- Smooth, operator-friendly motions
- Extensive Options Available:
 - ◇ 13 Jaw Options
 - ◇ 5 Mounting Brackets
 - ◇ 4 Manual Levers
 - ◇ Remote cable and pneumatic options



13 Jaw Options



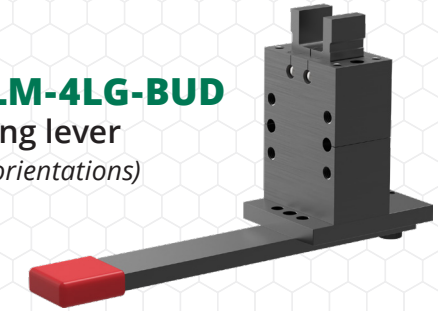
*CLM-XX-BUD-SS have SS 420 end pieces (standard versions have 1045 tool steel end pieces)

Actuation Options

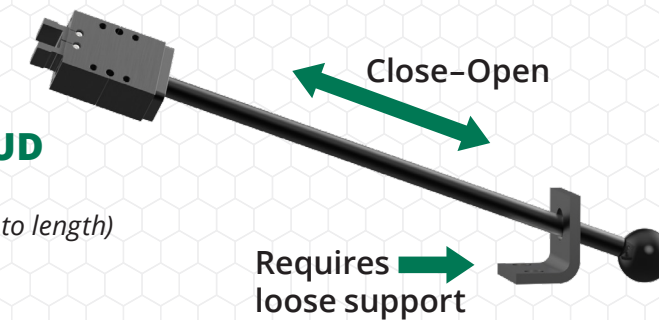
CLM-4L90-BUD
90° lever
(4 orientations)



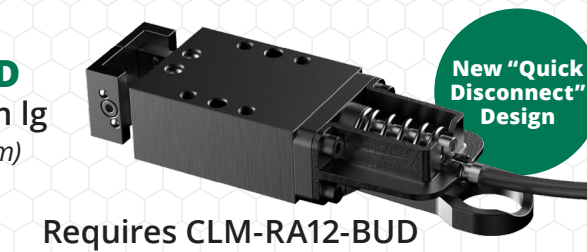
CLM-4LG-BUD
Long lever
(4 orientations)



CLM-4LS-BUD
Long shaft
(customer can cut to length)



CLM-4CBL2-BUD
Cable Assembly 2m lg
(CLM-4CBL2-3M-BUD: 3m)

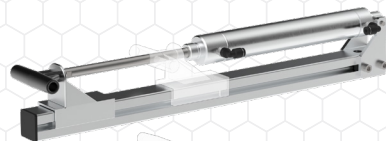


Accessories

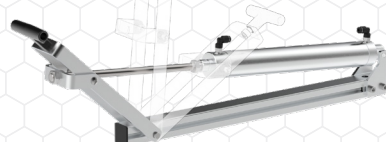
Pneumatic Actuators

On-fixture actuation for Clip Buddies equipped with CLM-4CYL-BUD. Shop air hookup is not required.

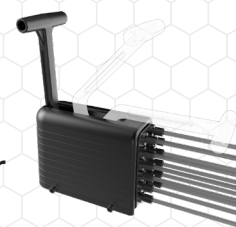
CLM-PA6-BUD
(For 1-6 CLM-4CYL-BUD Units)



CLM-PA10-BUD
(For 1-10 CLM-4CYL-BUD Units)



CLM-RA12-BUD
Remote Cable Actuator
(For 1-12 units equipped with CLM-4CBL-BUD or CLM-4CBL2-BUD)



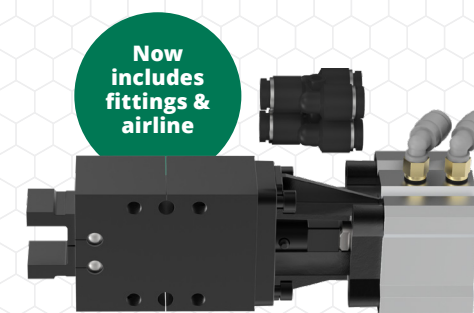
CLM-RV-BUD
Regulator & Valve Set
(For use with shop air)



CLM-4ST1-BUD
Stop Plate
(For single-side opening)



CLM-4CYL-BUD
Pneumatic Cylinder
(additional information sheet is available for pneumatic actuation)



**Lever Action
Open & Close**

